

# Newsletter



MEADOW PARK  
SCHOOL

## Message from the Deputy Headteacher

Dear Parents and Carers

I don't think there is ever a week at Meadow Park when we don't comment on how busy it has been! It is testament to the dedication and enthusiasm of our staff that so many activities and opportunities are provided for our pupils that go beyond their classroom experience.

It is my pleasure to be writing the news letter this week as Mrs Pettman has departed for China with our year 9 Mandarin students. As I write this they are currently mid-air enduring their 12-hour flight! We will all look forward to seeing the photos and hearing about their fantastic experience when they return in two weeks.

Our Silver Duke of Edinburgh Expedition returned on Wednesday evening with all pupils successfully completing their challenge in the very warm Shropshire countryside. I do not envy them carrying their heavy bags in the heat and pay tribute to their resilience and determination to achieve their goal. Many thanks to our DofE coordinators Mrs Webb and Miss Cresswell who accompanied the trip. Following the successful completion of the Silver Expedition, we launched the awards for the new cohorts with assemblies for year 8 and year 9 as well as a parents' information evening encouraging our pupils to take up this amazing opportunity. The Duke of Edinburgh awards will not only equip pupils with valuable new skills they will provide them with memories to last a life time!

The highlight of the week must surely have been our Transition events when we welcomed our

new year 7 cohort and their parents into school. It was lovely to meet our new parents as well as welcoming back some familiar faces! We were pleased with how many of our new parents commented on the warm and friendly atmosphere conveyed on the evening as parents got to meet their children's tutors, House Heads and senior members of staff. On induction day itself, the children took part in a range of lessons whilst collecting reward stamps to give them a head start in September! They also were privileged to get the first glimpse of our school show 'Sister Act' which we look forward to welcoming you all to next Thursday. Some tickets are still available on Parent Pay.

Enriching opportunities continue for year 10 as they carried out their work experience placements this week. Some of our students have secured some really exciting places to work at this week, including vets, pharmacists, The Wave and even British Dressage! We also have some pupils finding out what it is like on the other side of school as they work with some of our teams at Meadow Park. In fact, some of them are doing such a good job we won't want them to go back to being pupils next week!

With best wishes

Ms Lawrence  
Deputy Headteacher

## Nurturing Excellence, Growing Aspiration, Thriving Together



FINHAM PARK  
MULTI ACADEMY TRUST

Issue: 4<sup>th</sup> July 2025

# Talk The Talk

## CONFIDENT COMMUNICATION FOR LIFE

### Talk the Talk – Oracy Workshop

(Oracy is defined as the ability to express oneself fluently in speech.)  
In September, staff and pupils at Meadow Park will be embarking on a 3-year Oracy journey. The purpose is very simple - to empower all pupils to step into the best version of themselves and develop the confidence to express themselves eloquently inside and outside of lessons.

To launch this, on the 25<sup>th</sup> June, all year 9 pupils had the privilege of spending a whole day with trainers from 'Talk the Talk' working on their confidence and communication skills. Throughout the 5-hour workshop, all the pupils involved stood up and spoke in front of the class on multiple occasions with the vast majority delivering a final speech on a topic of their choice, on their own, at the front of the class, without notes.

Speaking in front of a room of your peers is a huge deal for many of us and yet again, we were blown away by our pupils, their incredible imaginations, heartfelt beliefs that they spoke about and their courage to step up to a challenge. Well done year 9! In the new academic year, it will be the turn of year 10.





# MPS DofE Silver Qualifying Expedition

On Monday 30<sup>th</sup> June, 17 Year 10s arrived at school at 6am ready to go on their Silver DofE Practice. Arriving at the Craven Arms Discovery Centre, all students set off on their first day of walking. Students did really well considering the heat and all students arrived at the campsite by 7pm. The next day, students were all up at 4:30am! Ready and raring to go. Students found day 2 easier and all groups had left the campsite by 7am, with the first group arriving at the final campsite at 1:30pm. The final day was similar with all students up by 4:30am and the last group had left by 6am. Students found the first day challenging which was mainly due to the heat, other days included walking along the top of the Long Mynd. Students also found the first campsite interesting due to it being a field with few facilities, they all preferred the second campsite which felt like luxury compared to the first!

We are all proud of the students and the way they represented the school, they showed the school values throughout the expedition.

Everyone who took part in the expedition successfully completed their Silver DofE and these will be handed out to students (once everything has been signed off and all sections completed) in the new academic year.

Well done Silver 2025!



# Growing Aspirations – Sports Updates

On Wednesday, a group of our dedicated sports leaders had the fantastic opportunity to take part in Paddle Fest, held at the Coventry Canal.

This was a brilliant day full of new experiences, where students got to try out kayaking, canoeing, and paddleboarding. It wasn't just about fun on the water — it was a well-deserved reward for all the hard work they've put in throughout the year as sports leaders.

These students have given up their time to support clubs, events, and younger students, always representing Meadow Park School with maturity, enthusiasm, and leadership. At Paddle Fest, they did exactly the same — showing teamwork, positivity, and great behaviour, making us all proud once again.

A big well done and thank you to all the students involved — your commitment and effort have not gone unnoticed!





# LIBRARY CLUBS NEXT WEEK ...

chillout  
MONDAYS  
in the LIBRARY

BOOK CLUB

round  
TUESDAYS  
in the LIBRARY

**AIR, LAND & SEA**

geeky  
WEDNESDAYS  
in the LIBRARY

*Magic: the Gathering*

SPORTY  
THURSDAYS  
in the LIBRARY

**DICECATHLON**

creative  
FRIDAYS  
in the LIBRARY

May 10 11 12 13 14 15 16 17 18 19 20 21 22 23 24 25 26 27 28 29 30 31

## News from the LIBRARY

# Meadow Park



## READING CHALLENGE

Have a go at as many of these reading activities as you can.

Everyone who completes a full line (in any direction) will get a prize.

If you complete all 16 ... well, who knows what could happen ...

## News from the LIBRARY

Read in an unusual  
place or position.



(Send a pic to [mp-reading@meadowparkschool.com](mailto:mp-reading@meadowparkschool.com))

Read a  
**GRAPHIC  
NOVEL**

Read a book from a  
**GENRE**  
you don't usually  
choose

Design  
a new  
book cover.



Read something  
someone else  
recommends



Read a book that has  
been adapted into a



or a  
**TV show.**

Go to a local  
**LIBRARY**

(While you're there,  
why not sign up –  
it's free, which is  
our favourite price! –  
and borrow a book?)

Read a non-fiction  
information  
book.



*First 16 players  
only!*

MPS PRESENTS

# HOUSE CHESS TOURNAMENT

Monday 30<sup>th</sup> July 2025 and Monday 14<sup>th</sup> July 2025

AUDIENCE AND VOLUNTEERS  
APPRECIATED

Can you reach the top? To join our knockout style tournament, come to F05 Tuesday, Thursday or Friday lunchtime this week to sign up! - You will be challenged!



## Enrichment Clubs – Half Term 5 and 6 (Up to Summer)

	Break	Lunch	After School
<b>Monday</b>	Basketball <b>Sports Hall</b> 	Chess Club <b>Library</b> Book Club <b>F17</b> All Year Rounders <b>Field (LTA)</b>  	Cricket Field <b>(GSK)</b> Athletics <b>(Week 1 track event, Week 2 100m, 200m, 400m, 800m, 1600m, 3200m, 6400m, 12800m, 25600m, 51200m, 102400m, 204800m, 409600m, 819200m, 1638400m, 3276800m, 6553600m, 13107200m, 26214400m, 52428800m, 104857600m, 209715200m, 419430400m, 838860800m, 1677721600m, 3355443200m, 6710886400m, 13421772800m, 26843545600m, 53687091200m, 107374182400m, 214748364800m, 429496729600m, 858993459200m, 1717986918400m, 3435973836800m, 6871947673600m, 13743895347200m, 27487790694400m, 54975581388800m, 109951162777600m, 219902325555200m, 439804651110400m, 879609302220800m, 1759218604441600m, 3518437208883200m, 7036874417766400m, 14073748835532800m, 28147497671065600m, 56294995342131200m, 112589990684262400m, 225179981368524800m, 450359962737049600m, 900719925474099200m, 1801439850948198400m, 3602879701896396800m, 7205759403792793600m, 14411518807585587200m, 28823037615171174400m, 57646075230342348800m, 115292150460684697600m, 230584300921369395200m, 461168601842738790400m, 922337203685477580800m, 1844674407370955161600m, 3689348814741910323200m, 7378697629483820646400m, 14757395258967641292800m, 29514790517935282585600m, 59029581035870565171200m, 118059162071741130342400m, 236118324143482260684800m, 472236648286964521369600m, 944473296573929042739200m, 1888946593147858085478400m, 3777893186295716170956800m, 7555786372591432341913600m, 15111572745182864683827200m, 30223145490365729367654400m, 60446290980731458735308800m, 120892581961462917470617600m, 241785163922925834941235200m, 483570327845851669882470400m, 967140655691703339764940800m, 1934281311383406679529881600m, 3868562622766813359059763200m, 7737125245533626718119526400m, 15474250491067253436239052800m, 30948500982134506872478105600m, 61897001964269013744956211200m, 123794003928538027489912422400m, 247588007857076054979824844800m, 495176015714152109959649689600m, 990352031428304219919299379200m, 1980704062856608439838598758400m, 3961408125713216879677197516800m, 7922816251426433759354395033600m, 15845632502852867518708790067200m, 31691265005705735037417580134400m, 63382530011411470074835160268800m, 126765060022822940149670320537600m, 253530120045645880299340641075200m, 507060240091291760598681282150400m, 1014120480182583521197362564300800m, 2028240960365167042394725128601600m, 4056481920730334084789450257203200m, 8112963841460668169578900514406400m, 16225927682921336339157801028812800m, 32451855365842672678315602057625600m, 64903710731685345356631204115251200m, 129807421463370690713262408230502400m, 259614842926741381426524816461004800m, 519229685853482762853049632922009600m, 1038459371706965525706099265844019200m, 2076918743413931051412198531688038400m, 4153837486827862102824397063376076800m, 8307674973655724205648794126752153600m, 16615349947311448411297588253504307200m, 33230699894622896822595176507008614400m, 66461399789245793645190353014017228800m, 132922799578491587290380706028034457600m, 265845599156983174580761412056068915200m, 531691198313966349161522824112137830400m, 1063382396627932698323045648224275660800m, 2126764793255865396646091296448551321600m, 4253529586511730793292182592897102643200m, 8507059173023461586584365185794205286400m, 17014118346046923173168730371588410572800m, 34028236692093846346337460743176821145600m, 68056473384187692692674921486353642291200m, 136112946768375385385349842972707284582400m, 272225893536750770770699685945414569164800m, 544451787073501541541399371890829138329600m, 1088903574147003083082798743781658276659200m, 2177807148294006166165597487563316553318400m, 4355614296588012332331194975126633106636800m, 8711228593176024664662389950253266213273600m, 17422457186352049329324779900506532426547200m, 34844914372704098658649559801013064853094400m, 69689828745408197317299119602026129706188800m, 139379657490816394634598239204052259412377600m, 278759314981632789269196478408104518824755200m, 557518629963265578538392956816209037649510400m, 1115037259926531157076785913632418075299020800m, 2230074519853062314153571827264836150598041600m, 4460149039706124628307143654529672301196083200m, 8920298079412249256614287309059344602392166400m, 17840596158824498513228574618118689204784332800m, 35681192317648997026457149236237378409568665600m, 71362384635297994052914298472474756819137331200m, 142724769270595988105828596944949513638274662400m, 285449538541191976211657193889899027276549324800m, 570899077082383952423314387779798054553098649600m, 1141798154164767904846628775559596109106197299200m, 2283596308329535809693257551119192218212394598400m, 4567192616659071619386515102238384436424789196800m, 9134385233318143238773030204476768872849578393600m, 18268770466636286477546060408953537745699156787200m, 36537540933272572955092120817907075491398313574400m, 73075081866545145910184241635814150982796627148800m, 146150163733090291820368483271628301965593254297600m, 292300327466180583640736966543256603931186508595200m, 584600654932361167281473933086513207862373017190400m, 1169201309864722334562947866173026415724746034380800m, 2338402619729444669125895732346052831449492068761600m, 4676805239458889338251791464692105662898984137523200m, 9353610478917778676503582929384211325797968275046400m, 18707220957835557353007165858768422651595936550092800m, 37414441915671114706014331717536845303191873100185600m, 74828883831342229412028663435073690606383746200371200m, 149657767662684458824057326870147381212767492400742400m, 299315535325368917648114653740294762425534984801484800m, 598631070650737835296229307480589524851069969602969600m, 1197262141301475670592458614961179049702139939205939200m, 2394524282602951341184917229922358099404279878411878400m, 4789048565205902682369834459844716198808559756823756800m, 9578097130411805364739668919689432397617119513647513600m, 19156194260823610729479337839378864795234239027295027200m, 38312388521647221458958675678757729590468478054590054400m, 76624777043294442917917351357515459180936956109180108800m, 153249554086588885835834702715030918361873912218360217600m, 306499108173177771671669405430061836723747824436720435200m, 612998216346355543343338810860123673447495648873440870400m, 1225996432692711086686677621720247346894991297746881740800m, 2451992865385422173373355243440494693789982595493763481600m, 4903985730770844346746710486880989387579965190987526963200m, 9807971461541688693493420973761978775159930381975053926400m, 19615942923083377386986841947523957550319860763950107852800m, 39231885846166754773973683895047915100639721527900215705600m, 78463771692333509547947367790095830201279443055800431411200m, 156927543384667019095894735580191660402558886111600862822400m, 313855086769334038191789471160383320805117772223201725644800m, 627710173538668076383578942320766641610235544446403451289600m, 1255420347077336152767157884641533283220471088892806902579200m, 2510840694154672305534315769283066566440942177785613805158400m, 5021681388309344611068631538566133132881884355571227610316800m, 10043362776618689222137263077132266265763768711142455220633600m, 20086725553237378444274526154264532531527537422284910441267200m, 40173451106474756888549052308529065063055074844569820882534400m, 80346902212949513777098104617058130126110149689139641765068800m, 160693804425899027554196209234116260252220299378279283530137600m, 321387608851798055108392418468232520504440598756558567060275200m, 642775217703596110216784836936465041008881197513117134120550400m, 1285550435407192220433569673872930082017762395026234268241100800m, 2571100870814384440867139347745860164035524790052468536482201600m, 5142201741628768881734278695491720328071049580104937072964403200m, 10284403483257537763468557390983440656142099160209874145928806400m, 20568806966515075526937114781966881312284198320419748291857612800m, 41137613933030151053874229563933762624568396640839496583715225600m, 82275227866060302107748459127867525249136793281678993167430451200m, 164550455732120604215496918255735050498273586563357986334860902400m, 329100911464241208430993836511470100996547173126715972669721804800m, 658201822928482416861987673022940201993094346253431945339443609600m, 1316403645856964833723975346045880403986188692506863890678887219200m, 2632807291713929667447950692091760807972377385013727781357774438400m, 5265614583427859334895901384183521615944754770027455562715548876800m, 10531229166855718669791802768367043231889509540054911125431097753600m, 21062458333711437339583605536734086463779019080109822250862195507200m, 42124916667422874679167211073468172927558038160219644501724391014400m, 84249833334845749358334422146936345855116076320439289003448782028800m, 168499666669691498716668844293872691710232152640878578006897564057600m, 336999333339382997433337688587745383420464305281757156013795128115200m, 673998666678765994866675377175490766840928610563514312027590256230400m, 1347997333357531989733350754350981533681857221127028624055180512460800m, 2695994666715063979466701508701963067363714442254057248110361024921600m, 5391989333430127958933403017403926134727428884508114496220722049843200m, 10783978666860255917866806034807852269454857769016228992441444099686400m, 21567957333720511835733612069615704538909715538032457984882888199372800m, 43135914667441023671467224139231409077819431076064915969765776398745600m, 86271829334882047342934448278462818155638862152129831939531552797491200m, 172543658669764094685868896556925636311277724304259663879063105594982400m, 345087317339528189371737793113851272622555448608519327758126211189964800m, 690174634679056378743475586227702545245110897217038655516252422379929600m, 1380349269358112757486951172455405090490221794434077311032504844759859200m, 2760698538716225514973902344910810180980443588868154622065009689519718400m, 5521397077432451029947804689821620361960887177736309244130019379039436800m, 11042794154864902059895609379643240723921774355472618488260038758078873600m, 22085588309729804119791218759286481447843548710945236976520077516157747200m, 44171176619459608239582437518572962895687097421890473953040155032315494400m, 88342353238919216479164875037145925791374194843780947906080310064630988800m, 176684706477838432958329750074291851582748389687561895812160620129261977600m, 353369412955676865916659500148583703165496779375123791624321240258523955200m, 706738825911353731833319000297167406330993558750247583248642480517047910400m, 1413477651822707463666638000594334812661987117500495166497284961034095820800m, 2826955303645414927333276001188669625323974235000990332994569922068191641600m, 5653910607290829854666552002377339250647948470001980665989139844136383283200m, 11307821214581659709333104004754678501295896940003961331978279688272766566400m, 22615642429163319418666208009509357002591793880007922663956559376545533132800m, 45231284858326638837332416019018714005183587760015845327913118753091066265600m, 90462569716653277674664832038037428010367175520031690655826237506182132531200m, 180925139433306555349329664076074856020734351040063381311652475012364265062400m, 361850278866613110698659328152149712041468702080126762623304950024728530124800m, 723700557733226221397318656304299424082937404160253525246609900049457060249600m, 1447401115466452442794637312608598848165874808320507050493219800098914120499200m, 2894802230932904885589274625217197696331749616641014100986439600197828240998400m, 5789604461865809771178549250434395392663499233282028201972879200395656481996800m, 11579208923731619542357098500868790785326998466564056403945758400791112963993600m, 23158417847463239084714197001737581570653996933128112807891516801582225927987200m, 46316835694926478169428394003475163141307993866256225615783033603164451855974400m, 92633671389852956338856788006950326282615987732512451231566067206328903711948800m, 185267342779705912677713576013900652565231975465024902463132134412657807423897600m, 370534685559411825355427152027801305130463950930049804926264268825315614847795200m, 741069371118823650710854304055602610260927901860099609852528537650631229695590400m, 14821387422376473014217086081112052205218558037201992197050570753012624593911808</b>





# SISTER ACT JR

*Presented By*  
**Meadow Park  
Theatre Company**

THURSDAY 10TH JULY

DOORS OPEN 16:30

TICKETS £3.50 & £5.50

SHOW STARTS 17:00

**CARD PAYMENTS ONLY** REFRESHMENTS AVAILABLE

BASED ON THE TOUCHSTONE PICTURES MOTION  
PICTURE "SISTER ACT" WRITTEN BY JOSEPH HOWARD

MUSIC BY  
ALAN MENKEN

BOOK BY  
CHERI STEINKELLNER  
& BILL STEINKELLNER

LYRICS BY  
GLENN SLATER

ADDITIONAL BOOK MATERIAL  
DOUGLAS CARTER BEANE



**Mr Walsh**  
**Curriculum Lead for Performing Arts**

# Coventry HAF

Holiday Activities and  
Food Programme 2025



## What is HAF?

HAF is a national Department for Education funded programme that enables eligible children and young people to attend free activities and experiences with free nutritional food provided. HAF activities and experiences take place in the Easter, **Summer** and Christmas school holidays.

**Activities:** A wide range of activities are available, including sports (basketball, football, swimming), arts (pottery, street art), trips to places like theme parks and the zoo, and more.

## Who is eligible?

Know who your HAF eligible children are (see link - [HAF eligibility](#))

## Helpful links and resources for schools

[Coventry City Council HAF homepage](#)

[Coventry City Council Cost of Living support](#)

[HAF eligibility](#)

[Eequ homepage](#)



Head to the HAF homepage



Head to the Eequ homepage



Useful Apps for Safety!



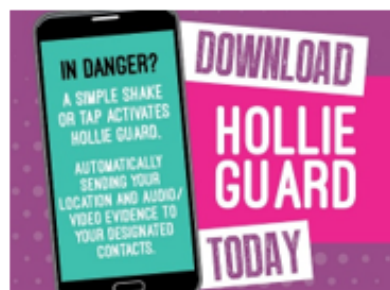
A useful App that has a FREE level of use, enabling families to have shared accounts that can track and monitor each other to ensure you know where your family are at all times in case of an emergency. There are enhanced features (at a cost) but this app has proven itself popular with families – so please take a look and see if it's right for you.

<https://www.life360.com/uk/>

**HOLLIE GUARD** - Promoted by West Midlands Police as a way to increase your safety whilst walking alone. Please visit the website for more information on this FREE App.

– Available on Google Play Store and Apple IOS.

<https://hollieguard.com/>



YMCA



The YMCA have a **FREE** 'Flourish Girls Group' starting on the 23<sup>rd</sup> July (Limited Spaces available).

The programme is for **girls aged between 11-18**.

If you are interested – please look at the attached poster and scan the QR code

NINTENDO SWITCH 2

Have you got a shiny new console in the house keeping your teenager busy? – You might be lucky enough to have the NEW Nintendo switch 2. It may have lots of updates and improvements but with this bring some new features which may cause concern.





# What Parents & Educators Need to Know about NINTENDO SWITCH 2

Nintendo launched its Switch 2 games console in early June 2025 – its first new console in eight years. While it builds on the original's success by remaining compatible with certain existing games, it also adds powerful hardware and new features like GameChat and a USB-C camera. As more children look to upgrade, it's important to understand how this new console might affect their play and safety.

## WHAT ARE THE RISKS?

### EASIER TO ACCESS MATURE CONTENT

18  
CENSORED

Despite Nintendo's reputation for family-friendly titles, mature games like *Cyberpunk 2077* and *Hitman* have been released onto the platform. With the Switch 2's improved performance, developers will be able to port even more mature-rated games. These may appeal to children due to their popularity, but they contain content that is highly unsuitable for young audiences.

### IN-APP & GAME STORE PURCHASES

The Nintendo eShop enables purchases with just a few taps. If payment details are saved and PIN protection is disabled, children may unknowingly make costly purchases – including game add-ons, cosmetic items or entire new releases – without parental approval.

### UNRESTRICTED ONLINE PLAY IN SOME GAMES

While GameChat is one feature, Switch 2 also connects to the broader Nintendo Switch Online service. Many free-to-play titles like *Fortnite* or *Splatoon 3* allow voice or text chat with strangers unless chat settings are adjusted, meaning children could encounter inappropriate language or unwanted contact.

### GAMECHAT & REAL-TIME VOICE COMMUNICATION

GameChat enables live chatting with up to 12 people, even across different games, with optional video and screen-sharing. Though children under 16 are restricted to chatting only with approved friends, the sheer interactivity could raise privacy concerns or create pressure to remain online longer.

### CAMERA COMPATIBILITY & PRIVACY CONCERNS

The optional USB-C camera supports video calling and facial overlays in games; however, this also raises the risk of cyberbullying or the unwanted sharing of personal images. The camera can be disabled, removed or covered, and parental controls are essential to manage how and when it is used.

### POWERFUL PULL OF FAMILIAR CHARACTERS

Nintendo's mascot, Mario – along with Pikachu, Donkey Kong and others – remains hugely appealing to younger audiences, especially after the success of the recent film, *The Super Mario Bros. Movie* (2023). These beloved icons are central to Nintendo's branding and often feature in merchandising, adverts and in-game promotions, creating strong emotional attachments in children and a sense of urgency to keep up with their peers.

## Advice for Parents & Educators

### CHECK RATINGS & USE PARENTAL CONTROLS

Every Switch and Switch 2 game comes with a PEGI age rating. Before buying one, ensure the content matches your child's age. Use the Nintendo Parental Controls app to monitor gameplay, set screen-time limits and manage friend requests.

### REMOVE OR RESTRICT PAYMENT METHODS

Avoid accidental spending by unlinking credit cards from the device. Instead, consider adding funds via prepaid eShop cards or requiring a PIN for purchases. Some banking apps can also be set to approve transactions manually.

### REVIEW FRIEND LISTS AND CHAT PERMISSIONS

Child profiles are restricted to chatting with approved friends only, but it's good practice to regularly check their friend list and communication settings. Use the Parental Controls app to switch off voice or video chat if necessary.

### ENCOURAGE OPEN CONVERSATIONS

Teach children how to block, report and capture any behaviour or content that makes them uncomfortable. The console's built-in tools allow them to create screenshots and video clips, which can aid in reporting any issues. Keeping an open dialogue helps children feel supported and safe.

### Meet Our Expert

Lloyd Coombes is the Games Editor of Daily Star and has been working in the gaming and tech industry for five years. A regular visitor to the App Store to try out new tools, he's also a parent and understands the importance of online safety. He's also a tech and fitness writer and has been published on sites including IGN, TechRadar, and plenty more.



#WakeUpWednesday

The National College



**STARTING  
23RD  
JULY**

# Girls GROUP YMCA



**PATHWAYS**  
FAMILY HUB

✦ **6-WEEK GIRLS PROGRAMME** ✦

**1:00-2:30PM**






**PATHWAYS HUB, LAWERENCE ROAD, RADFORD,  
COVENTRY, CV6 1HD**

**LOOKING FOR A SPACE TO GROW, CONNECT & FEEL SUPPORTED?  
JOIN US FOR A 6-WEEK JOURNEY OF EMPOWERMENT, SELF-  
DISCOVERY & PERSONAL GROWTH!**

**SCAN THE QR CODE TO BOOK YOUR PLACE!**



## **WHAT'S IN STORE:**

-  **CONFIDENCE BUILDING**
-  **MENTAL WELL-BEING**
-  **POSITIVE BODY IMAGE**
-  **HEALTHY RELATIONSHIPS**
-  **AND MORE!**

## **WHY COME ALONG?**

- **BOOST YOUR CONFIDENCE**
- **LEARN WELL-BEING TIPS**
- **BUILD FRIENDSHIPS & SUPPORT**
- **EXPLORE HEALTHY RELATIONSHIPS**

**A SAFE, WELCOMING SPACE FOR ALL GIRLS TO GROW TOGETHER**



**DON'T MISS OUT!**



As a reminder, we're using #easyfundraising to help raise money for Finham Park Multi Academy Trust in 2025. To get involved, sign up and shop via the easyfundraising website or App with over 8,000 retailers. You'll raise free donations for us as you shop online at no extra cost! All the big names including eBay, Tesco, John Lewis & Partners, TUI, and many more will donate. We'll be so grateful for your donations! Plus, sign up today and we could win a £500 donation:

<https://join.easyfundraising.org.uk/finham-park-multi-academy-trust/9iw43f/c2s/ahT9laEN/CE946/facebook/>



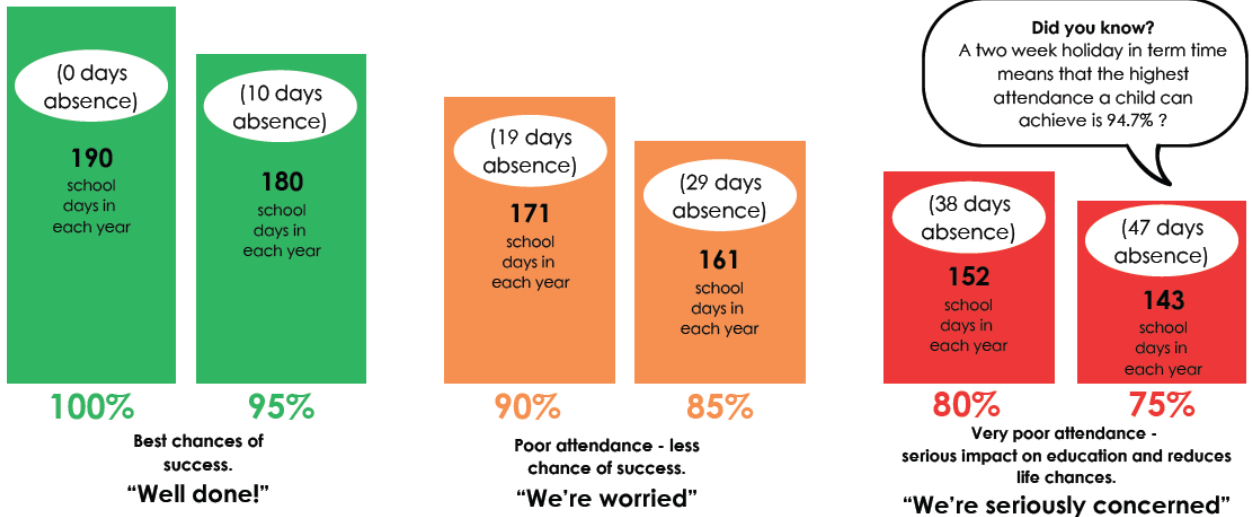
# Good attendance means...

being in school at least 95% of the time or 180 to 190 days

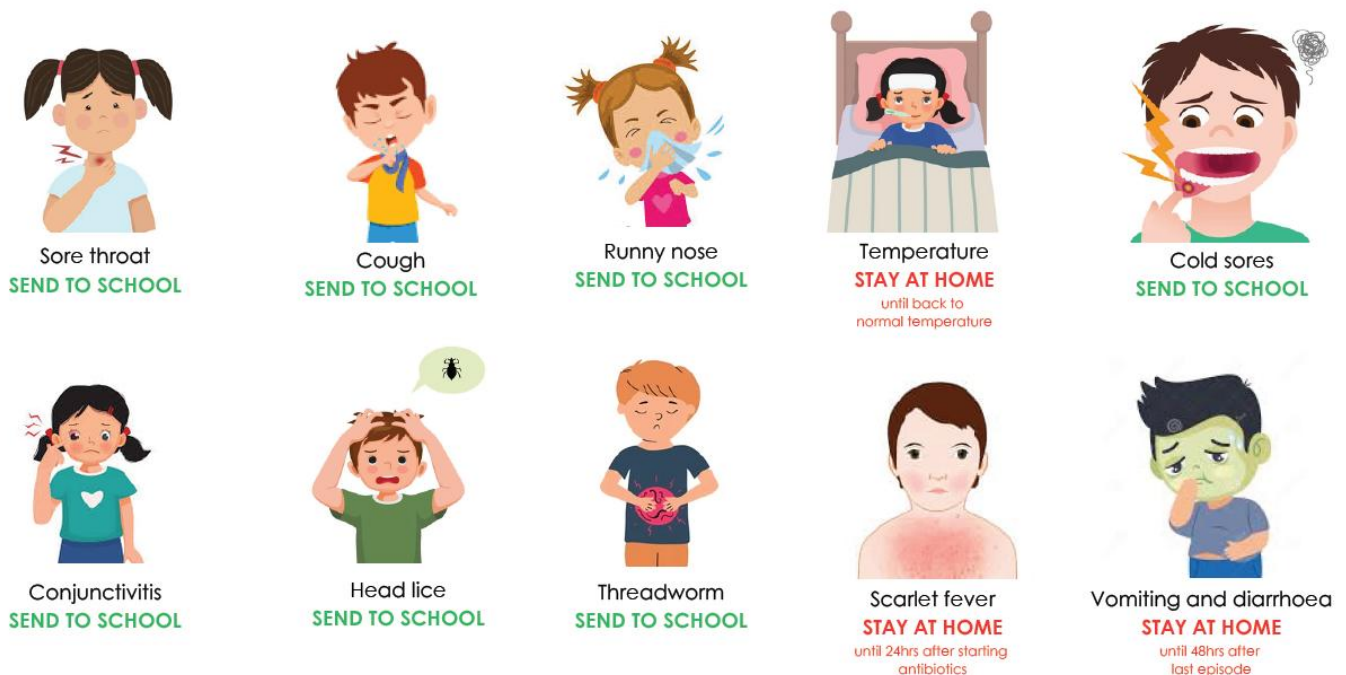
365 days in a calendar year

## 175 days not at school!

All this time for shopping, holidays and appointments.



## HOW ILL DO CHILDREN NEED TO BE TO NOT GO TO SCHOOL?



For further guidance see NHS website [www.nhs.uk/live-well/is-my-child-too-ill-for-school/](http://www.nhs.uk/live-well/is-my-child-too-ill-for-school/)

# Uniform



## School shoes guidance

Plain black with no logos  
No high heels, 'sliders', boots, sling back or open-toed shoes  
Black leather or leather effect

**TRAINERS AND CANVAS SHOES (VANS/CONVERSE) ARE NOT ACCEPTABLE**





## Summer Term 2025

Term Starts	Monday 28th April
May Day Bank Holiday	Monday 5th May
Half Term	Saturday 24th May – June 1st June
Last Day of Term	Friday 18th July
Summer Holiday Starts	Saturday 19th July



# MEADOW PARK SCHOOL

THRIVING TOGETHER